

Project 378: School Block Window Replacement

Client: Borden Grammar School, Sittingbourne, Kent

Programme: 4 Weeks

Construction Details: Aluminium Doors, Aluminium Windows, Double Glazed, Improved Thermal Efficiency, Toughened Safety Glass

[View this case study on WallerServices.com](https://www.wallerservices.com)



School Block Window Replacement

We carried out this school block window replacement project during the summer holidays. The existing sliding sash windows were over twenty years old and had reached the end of their life. Due to the age of the windows, the springs that control the movement of the windows had started to fail. This meant that the sliding sash could drop down from the open position at any time and potentially cause injury. In addition, the windows were not as energy efficient as modern windows, contributing to heat loss of the building and higher energy costs.

A Change of Window Style

After working closely with the school, a new style of window was decided on. We changed the colour of the aluminium window frames to white housing Georgian bar double glazed units to match other buildings at the school. Moving from a sliding sash window to a 50/50 top opening sash will improve the safety and future longevity of the the windows. This also means easier opening and closing of the window. Additionally, the new windows have drastically changed the look of the building providing a brighter, more modern feel.

Energy Efficient Windows

Due to rooms becoming very warm during the summer months, the glass installed was solar controlled which deflects the suns rays to keep the classrooms at a cooler, controlled temperature. This doesn't effect the temperature during colder months, in fact along with argon gas filled units, the new windows will improve the energy efficiency of the building and lower energy consumption meaning that the school will save money in the future.

To complete the project we installed a white aluminium louvre boiler room door. The school was very pleased with the windows and how they have transformed the look of the building.

-

For more projects similar to this one, please click on the following link-
<http://www.wallerservices.com>

-

Building Services We Provide In Schools

The building services we provide include smaller refurbishments through to extensions and new builds. The services we provide include anything that a school would require. This includes, toilet and kitchen refurbishments. We also install fencing, flooring and carry out complete new builds. Check out our website case studies to view projects that we have recently completed.

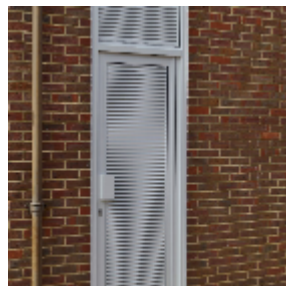
Glazing Services We Provide In Schools

We carry out works from window and hinge repairs through to complete aluminium and uPVC window and door installations.

Contact Waller Building and Glazing Services

Based in Sittingbourne, Kent, we carry out works throughout the south east of England. If you would like a quotation on any size of building or glazing project please contact us. Telephone – 01795 424435. Additionally email mark@wallerservices.com

To check out what we are up to at the moment visit our Facebook page- <https://www.facebook.com/profile.php?id=100063701672876> alternatively see what we are tweeting- <https://twitter.com/BuildingOnTrust>



Building on trust... together

Waller Associates Ltd

Web: www.wallerservices.com

Tel: 01795 424 435

Fax: 01795 424 812
sales@wallerservices.com