

Project 356: College Aluminium Window Replacement

Client: AP Cost Consultants

Programme: 16 Weeks

Construction Details: Aluminium Windows, School Improvement, Toughened Safety Glass

[View this case study on WallerServices.com](https://www.wallerservices.com)



College Aluminium Window Replacement

This College Aluminium Window Replacement project was the result of a successful tender process.

The college needed to replace the wooden windows which were double glazed but past their best. Many of the glass units had broken down which meant that they were not efficient, allowing cold air in during the winter months. In addition, some of the wooden frames were corroding. The project was to replace the windows on all five floors of the building's rear elevation. The aluminium windows installed by Waller Glazing Services are a commercial product which means that they are more durable and longer lasting. Additionally the new windows offer increased security and will be more energy efficient which will help lower the cost of future heating bills. The building also looks more modern.

Solar Glass

The elevation of the building suffered from strong sun exposure meaning high classroom temperatures in the summer. Solar controlled glass was installed which reflects the sun's rays and regulates the temperature in the classroom. The glass also controls the internal temperature in the winter by keeping the warm air inside the building.

Brickwork Repointing

Part of the works included repointing the brickwork of the same elevation that was having the windows replaced. The size of the building meant that scaffolding was required to install the windows. It made sense to carry out the repointing works while the scaffolding was up for the window works. In fact the repointing was carried out first and was followed by the glazing team installing the new windows.

Mortar protects against water ingress and helps prevent heat loss through the walls. After rain, water can freeze in the bricks and surrounding mortar, expanding and causing damage. This freeze then thaw weathering does not look good and receding mortar can lead to a damp and cold building.

For similar projects that we carry out in schools please click on the following link to the education section of our website-<https://www.wallerservices.com/schools-education-clients/>

-

Waller Building and Glazing Services

In the last eight years, Waller Associates has worked in over 190 schools. Our reputation in the education sector is growing fast. Waller Building and Glazing is Fensa, Chas, Constructionline and

Safecontractor registered.- Additionally, all of our staff are DBS certified. This means that our staff are suitable to work in schools. Furthermore we would be happy to price any maintenance or refurbishment works for your school.

Building Services We Provide In Schools

The building services we provide include smaller refurbishments through to extensions and new builds. We cover all the building as well as glazing services that a school would require. This includes, toilet and kitchen refurbishments. We also install fencing, flooring and carry out complete new builds. Check out our website case studies to see projects we have recently completed.

Glazing Services We Provide In Schools

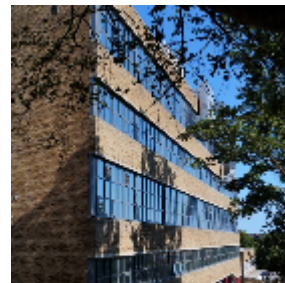
We carry out works from window and hinge repairs through to complete aluminium and uPVC window and door installations.

Contact Waller Building and Glazing Services

Based in Sittingbourne, Kent, we carry out works throughout the south east of England.-If you would like a quotation on any size of building project, please contact us. Telephone – 01795 424435
Additionally email mark@wallerservices.com

Visit our twitter page to see what we are up to at the moment-<https://twitter.com/BuildingOnTrust>

As well as twitter, why not visit our Facebook page too





Building on trust... together

Waller Associates Ltd

Web: www.wallerservices.com

Tel: 01795 424 435

Fax: 01795 424 812

sales@wallerservices.com