

## Project 353: Kemsley Primary Academy Toilet Refurbishment

**Client:** Kemsley Primary Academy

**Programme:** 9 Weeks

**Construction Details:** Carpentry, Cubicles, Decorating, Floor Coverings, Ground Works, Partitioning, Sanitary Ware, School Improvement, Toilet Cubicles, Toilet Refurbishment

[View this case study on WallerServices.com](http://WallerServices.com)



## **Kemsley Primary Academy Toilet Refurbishment**

We carried out the Kemsley Primary Academy toilet refurbishment project during lockdown 3. We were able to bring the works forward due to there being no pupils at the school. The works initially consisted of 6 number toilets;

- 1&2 Yrs Boys and Girls (2no)
- 3&4 Yrs Boys and Girls (2no)
- 5&6 Yrs Boys and Girls (2no)

However, as we started the project, the school decided that they would like to refurbish Year R and the nursery toilets too. In total, all of the school's pupil toilets were to be completely refurbished.

### **Refurbishment**

The existing toilets were the original ones dating back to when the school was built. They looked dated and the colours were dark and plain. Some of the cubicles had become unusable and the flooring had perished in areas. The project started with a complete strip out including a damp investigation of the floorboards. The original cubicles were removed as were all sanitary ware, flooring and fixture and fittings. We now had a blank canvas and began by installing new floorboards and non-slip vinyl flooring. The areas were then decorated throughout making a huge difference. Next we installed bright cubicle systems and vanity units complete with new plumbing and sanitary ware.

### **Bright Colours**

We supplied the school with the toilet cubicle-brochure which gave them a large range to choose from. As you can see from the images, the school chose bright colour schemes which lightened up each area and will appeal to primary school age students. The colours also provide a more modern feel and with the quality of materials installed should be enjoyed for many more years.

### **Working During Lockdown 3**

As we went into lockdown 3 we were concerned as a company that projects would be held up. Fortunately, this couldn't have been further from the truth. After assuring clients that we were following the government coronavirus guidelines, schools were happy for us to carry out building and glazing projects. Due to schools, academies and colleges having very few pupils in attendance, they brought projects forward and we were able to work during term time. This was an advantage for this project and meant that we completed a 15 week project in 9 weeks. The school was extremely happy that the new toilets were completed before the return of the students.

### **Building Services We Provide In Schools**

The building services we provide include smaller refurbishments through to extensions and new builds. We cover all the building as well as glazing services that a school would require. This includes, toilet and kitchen refurbishments. We also install fencing, flooring and carry out complete new builds. Check out our website case studies to see projects we have recently completed.

### **Glazing Services We Provide In Schools**

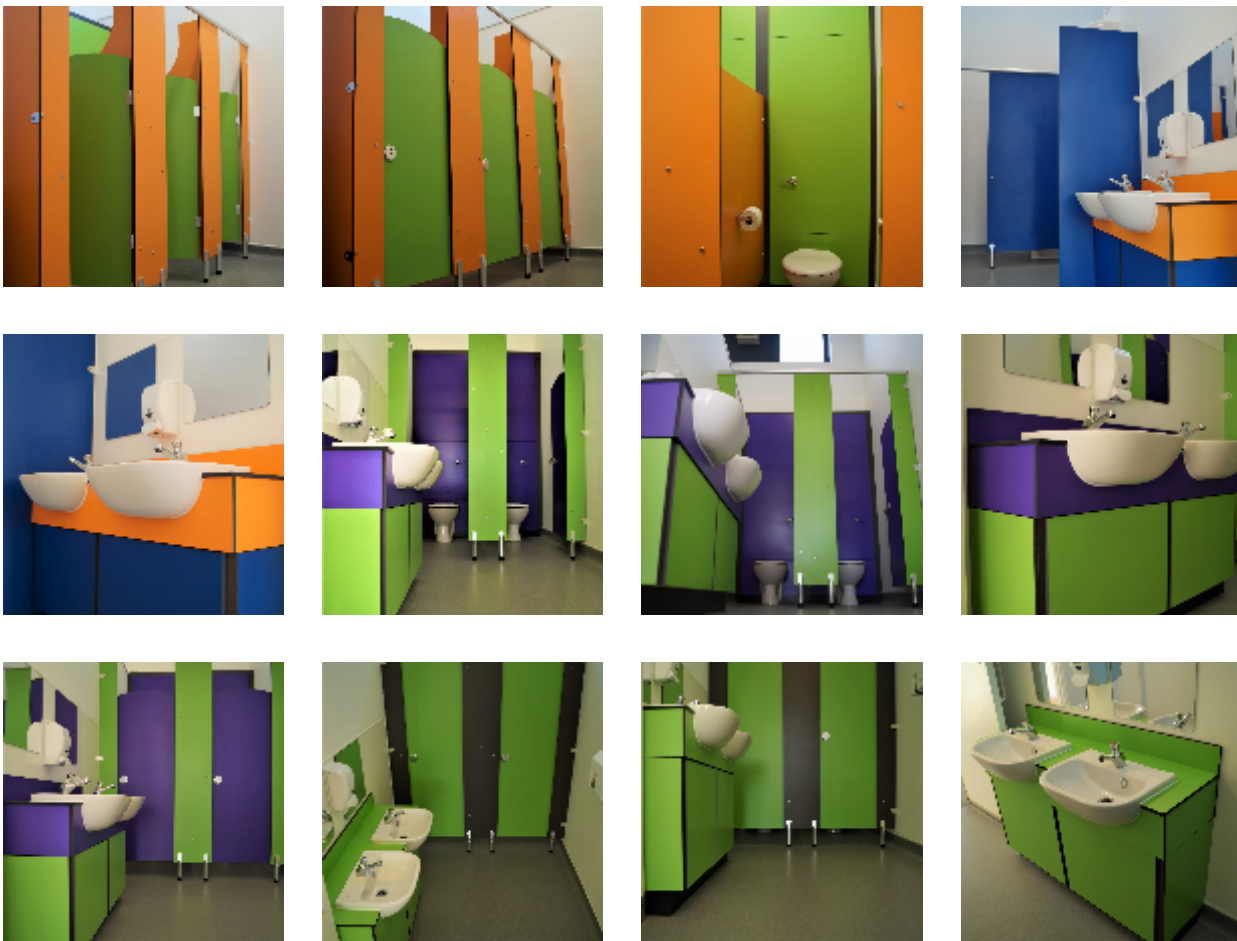
We carry out works from window and hinge repairs through to complete aluminium and uPVC window and door installations.

### **Contact Waller Building and Glazing Services**

Based in Sittingbourne, Kent, we carry out works throughout the south east of England.-If you would like a quotation on any size of building project, please contact us. Telephone – 01795 424435  
Additionally email [mark@wallerservices.com](mailto:mark@wallerservices.com)

Visit our twitter page to see what we are up to at the moment- <https://twitter.com/BuildingOnTrust>

As well as twitter, why not visit our Facebook page too



Building on trust... together

**Waller Associates Ltd**

Web: [www.wallerservices.com](http://www.wallerservices.com)

Tel: 01795 424 435

Fax: 01795 424 812

[sales@wallerservices.com](mailto:sales@wallerservices.com)