

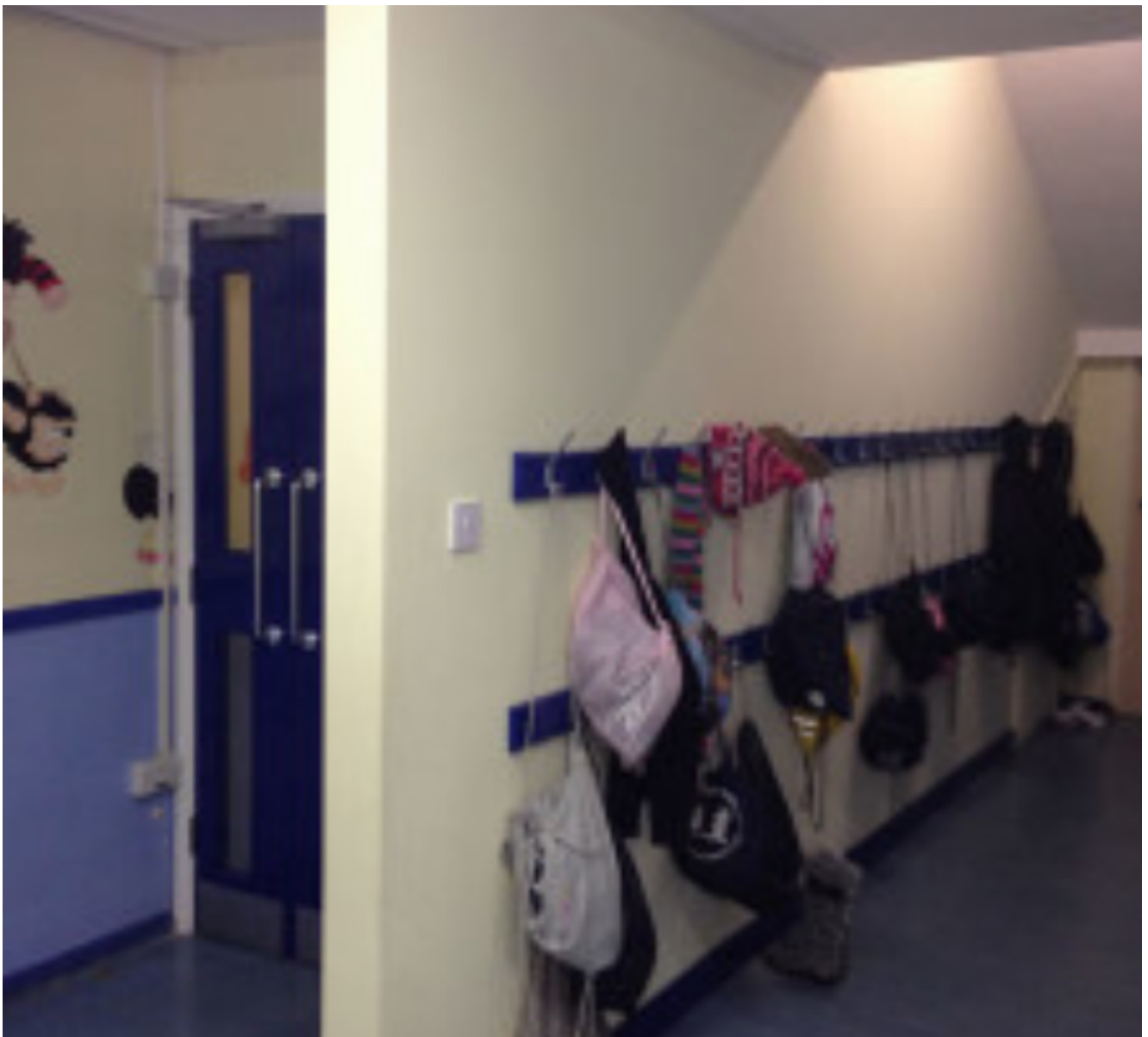
## Project 164: New School Cloakroom Area

**Client:** Regis Manor Primary School, Sittingbourne, Kent

**Programme:** 9 Days

**Construction Details:** Building Control, Decorations, Design Drawings, Dry Lining, Fire Precaution, Partitioning, Plastering, Renovation

[View this case study on WallerServices.com](http://WallerServices.com)



## **New School Cloakroom Area**

As with many schools, space is at a premium. The Premises Manager at Regis Manor suggested using an unused area under two existing stairwells to free up additional space that would be perfect for small learning groups. Additionally a new school cloakroom area was created. We produced drawing specifications and liaised with building control regarding the regulations that affect the project. Once all the information was compiled we programmed the works to be carried out over a school half term using both weekends.

The school where extremely accommodating while the works took place and the end result was a full transformation of a previously disused area.

## **Waller Building Services in Schools**

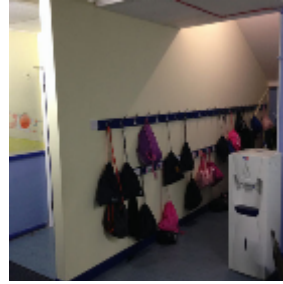
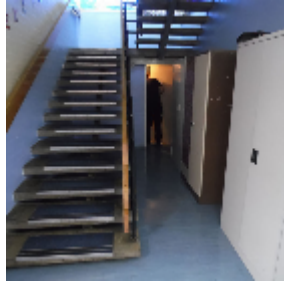
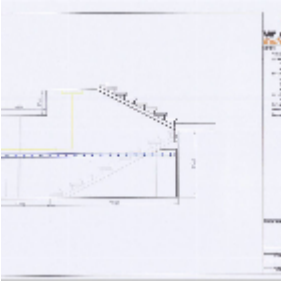
In the last five years, Waller Building has worked in over 125 schools. Our reputation in the education sector is growing fast. The services we provide include smaller refurbishments through to extensions and new builds. Waller Building is a Fensa, Chas, Constructionline and Safecontractor approved company. We are also a Kent County Council approved contractor. All of our workmen are DBS checked. This means you can be assured that our staff are suitable to work in your school. You can also be confident that we are a company that is built on trust. If your school is planning any size of project, we would be delighted to provide you with a quotation. Furthermore we would be happy to price any maintenance or refurbishment works for you.

## **Building Services We Provide**

We cover all of the building as well as glazing services that a school may need. This includes, toilet and kitchen refurbishments. We also install fencing, flooring and carry out complete new builds. Furthermore the glazing division carries out window repairs. We also install uPVC and aluminium windows and doors. View our case studies to see projects we have recently completed on our website.

## **Contact Waller Building**

We are based in Sittingbourne, Kent. We carry out works throughout the south east of England. If you would like a quotation on any size of project, please contact us. Call 01795 424435 Additionally email [mark@wallerservices.com](mailto:mark@wallerservices.com)



Building on trust...  
together

**Waller Associates Ltd**

Web: [www.wallerservices.com](http://www.wallerservices.com)

Tel: 01795 424 435

Fax: 01795 424 812

[sales@wallerservices.com](mailto:sales@wallerservices.com)